

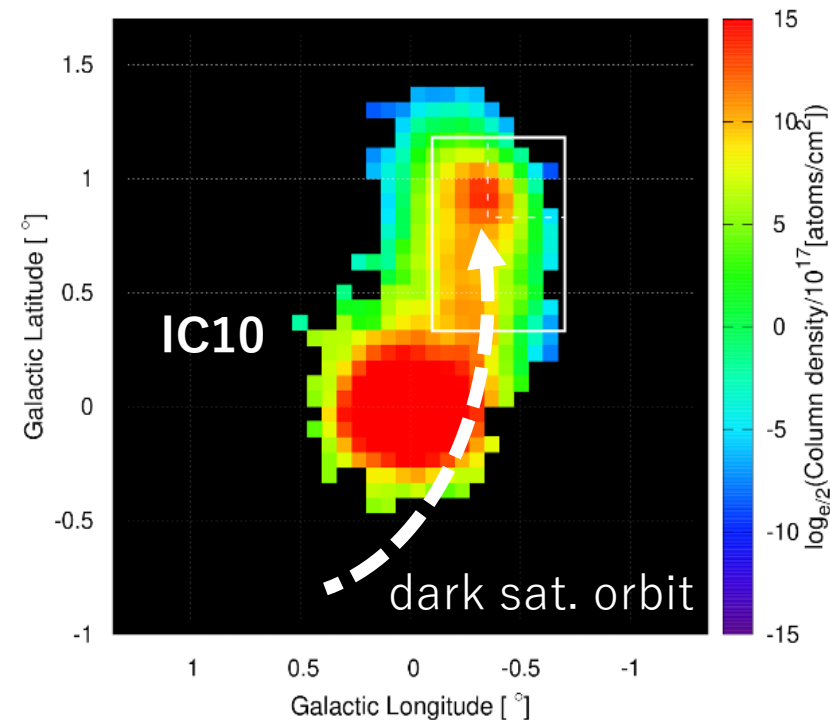
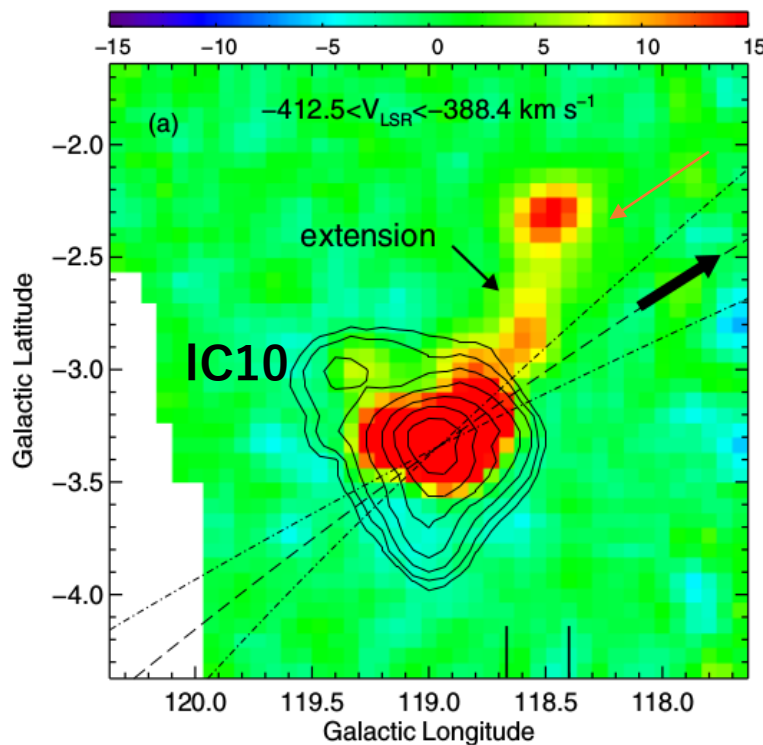
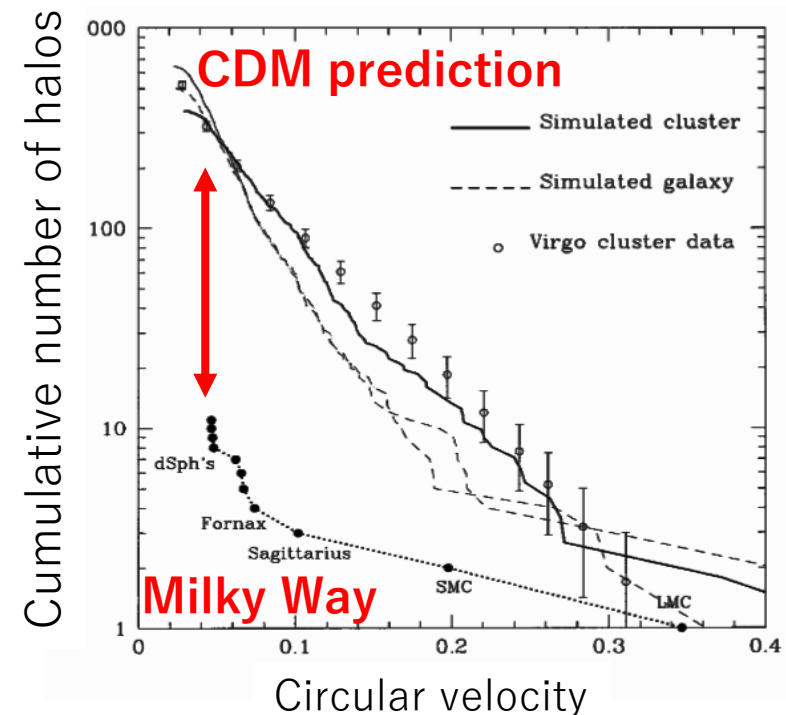
Galaxy collisions and the missing satellite problem in the cold dark matter model

Masao Mori, Ginjiro Miyagawa(Univ. of Tsukuba), Miki Yohei(Univ. of Tokyo), Takanobu Kirihra(Chiba Univ.)

Observation

Hydro. simulation

Missing satellites problem



The missing satellites problem refers to the overabundance of theoretically predicted CDM subhalos compared to observed satellite galaxies. The most popular interpretation is the existence of dark satellites. Our simulation of the galaxy collisions between a dark satellite and IC10 shows that IC10 is one of the possible sites for indicating the existence of the dark satellite galaxy.